



STORAGE SILO

ZS

Storage bins, manufactured by TAURUS, are intended for storage of grain and dry bulk abrasive materials. For technological units manufactories compound animals, harvest lines and subsequent technological equipment for processing bulk materials.

The tanks are designed for outdoor spaces. The volume of stored material and the number of forces can be selected according to customer requirements.

Construction of reservoirs is conceived as consisting of bolted strengthen parts, hoppers, convoluted panels, posts and container above this silo parts. Above the silo part covered roof to protect this part of the technology to weather conditions.



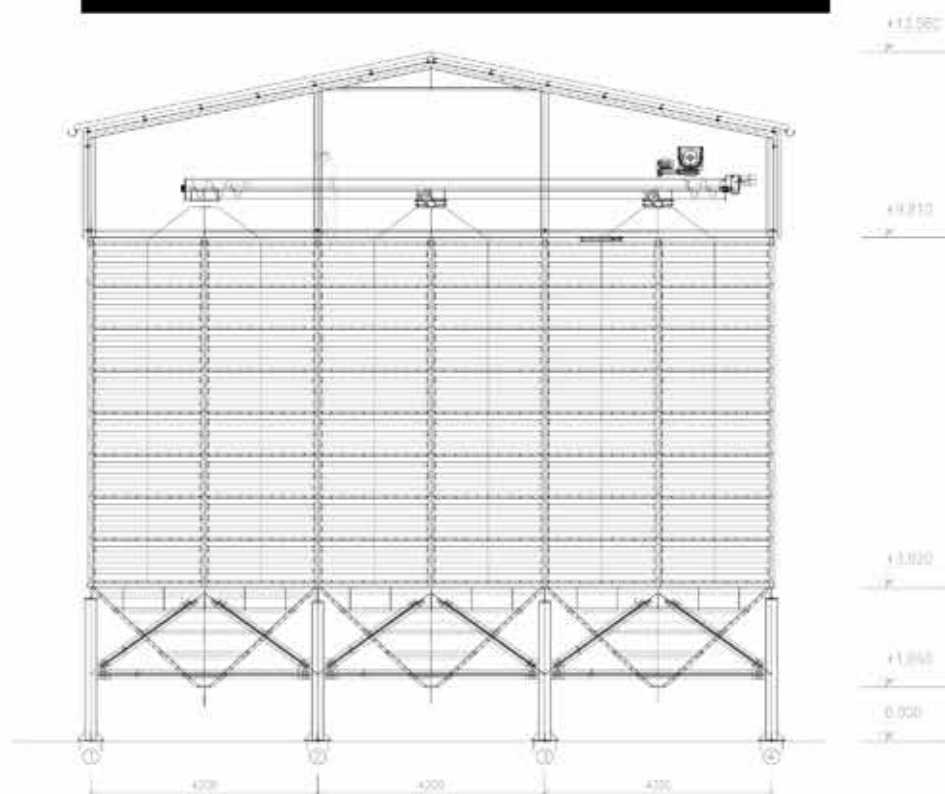
Additional equipment:

- Ladders
- Platforms
- Landings
- Eaves system
- Inspection supine
- Active ventilation
- Technologies for the transport and processing of materials





SKETCH SILOS



Technological scheme of integration in the post-harvest storage line

