



DOUBLE DISCHARGING SCREW CONVEYOR

DVŠ 250

Double Discharging Screw DVŠ produced by TAURUS, s.r.o., Chrudim, is a machine designed for horizontal transport of bulk non-abrasive materials. The material is transported by means of two worm shafts with progressive pitch rotating in a worm gear box in opposite directions with simultaneous mixing from inlet to outlet.

The machine is designed for integration into technological units for preparation of compound feedingstuffs for animals, or into flour management in mills and similar industrial operations consisting of storage equipment and connected technological equipment for processing of bulk materials.

Various surface treatments are on offer: varnish (synthetic), hot dip galvanizing, stainless steel.

Advantages:

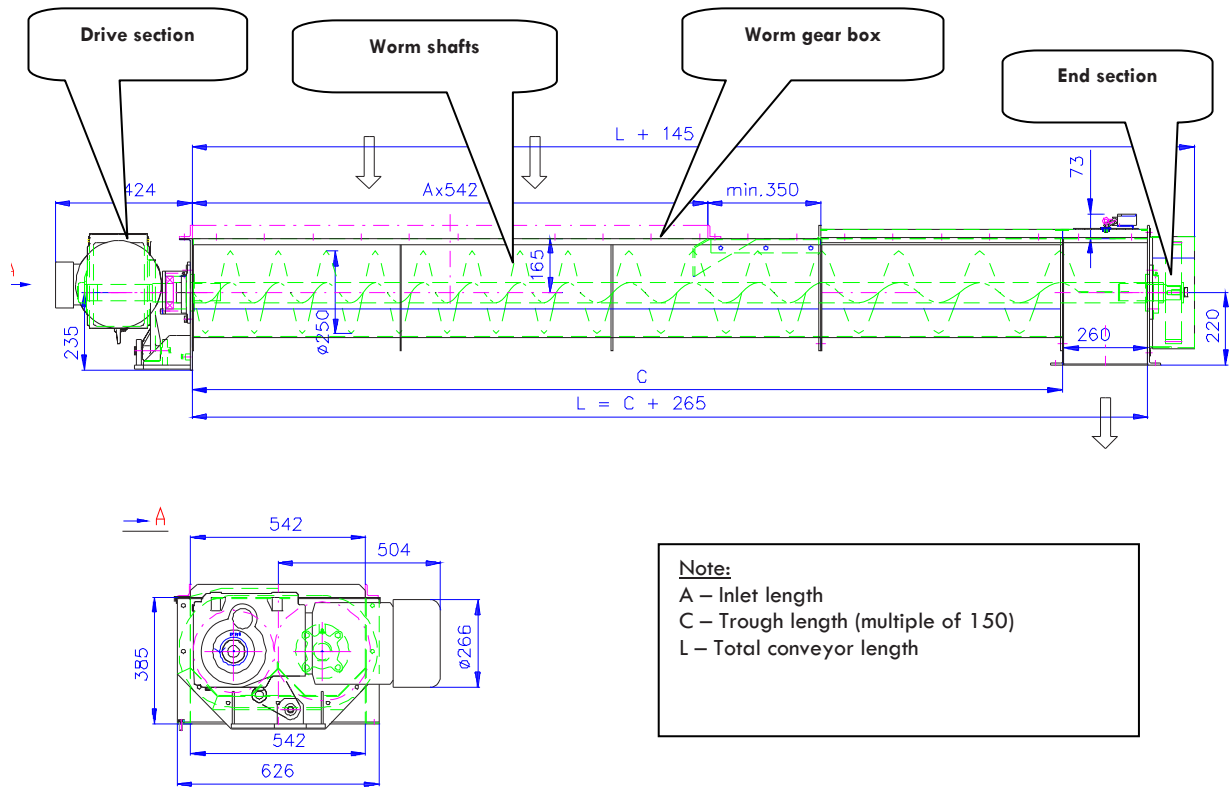
- Economical and reliable operation not requiring permanent attendance
- Minimum maintenance demands
- Progressive helix prevents machine congestion
- Low energy demands and economic demands
- Can be used either as a discharging screw or as mixing equipment for materials flowing with difficulty and floury materials stored in silos



Item	Unit	DVŠ 250
Worm diameter	mm	250
Length max.		2000 – 5000
Machine height		385
Weight without drive	Kg/m	55
Drive and end piece weight		190 - 235
Rated supply voltage	V	400/690
Rated frequency	Hz	50
The lowest degree of electrical equipment protection	-	IP 54
Installed power (according to length and capacity)	kW	3 – 5.5
Capacity	m ³ /h	40
Basic machine speed	rpm	40



Basic Dimensions of the Machine



Inlet length according to the customer's requirement
Maximum conveyor length $L = 5000$ mm